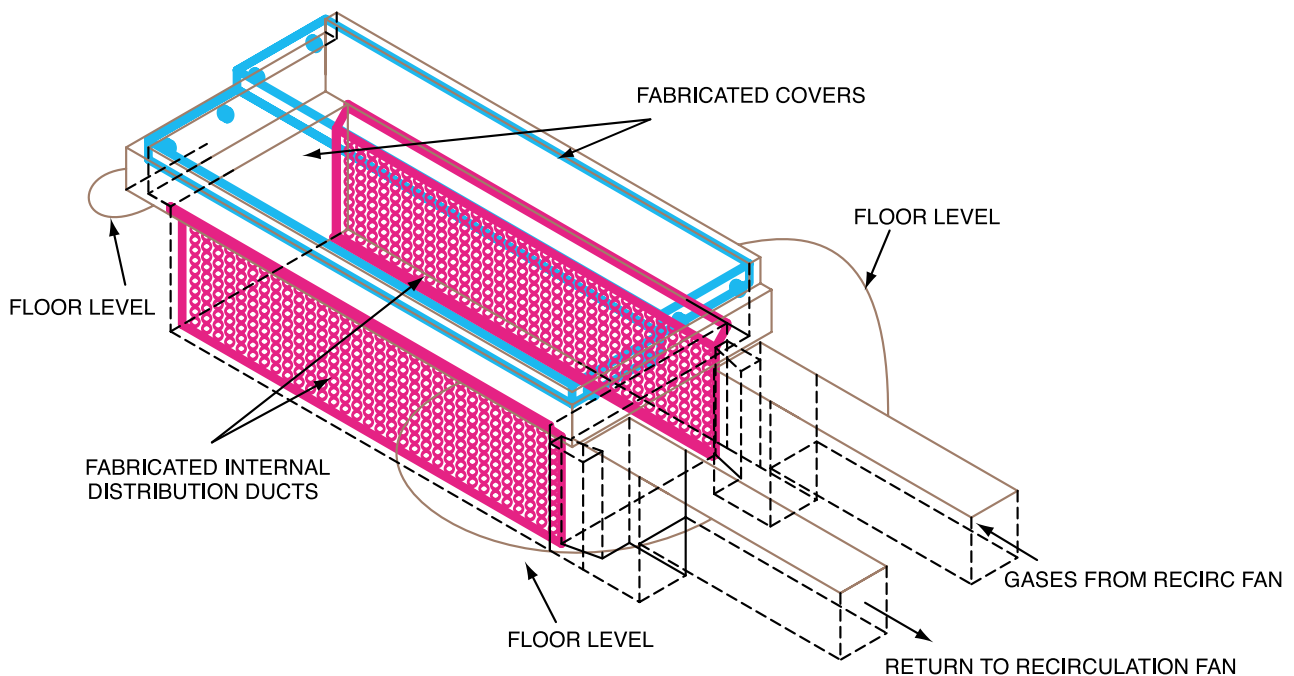


**TYPICAL SECTION THROUGH OVEN CHAMBER
ILLUSTRATING POWERFUL CROSS FLOW CIRCULATION
OF AIR STREAM**

- **Powerful recirculation fan**
- **Effective drying**
- **Uniform heating**
- **Insulated covers**
- **Simplified construction**
- **Waste furnace gas heated**
- **Flue stack air heaters**
- **No auxiliary burners necessary**



OVERALL VIEW OF ASSEMBLED OVEN

General Features

- **Powerful Recirculation Fan**

Forced air recirculating system based upon established commercial oven design criteria for uniform heating

Oven chamber features high volume cross flow circulation through load for effective drying

- **Insulated Covers**

Simple rail mounted electrically driven covers

- **Simplified Construction**

Main oven chamber & ducts constructed as part of foundations in standard reinforced concrete

- **Heating by Furnace Exhaust Gases**

Drying ovens can be heated directly from the exhaust gases from the galvanising furnace

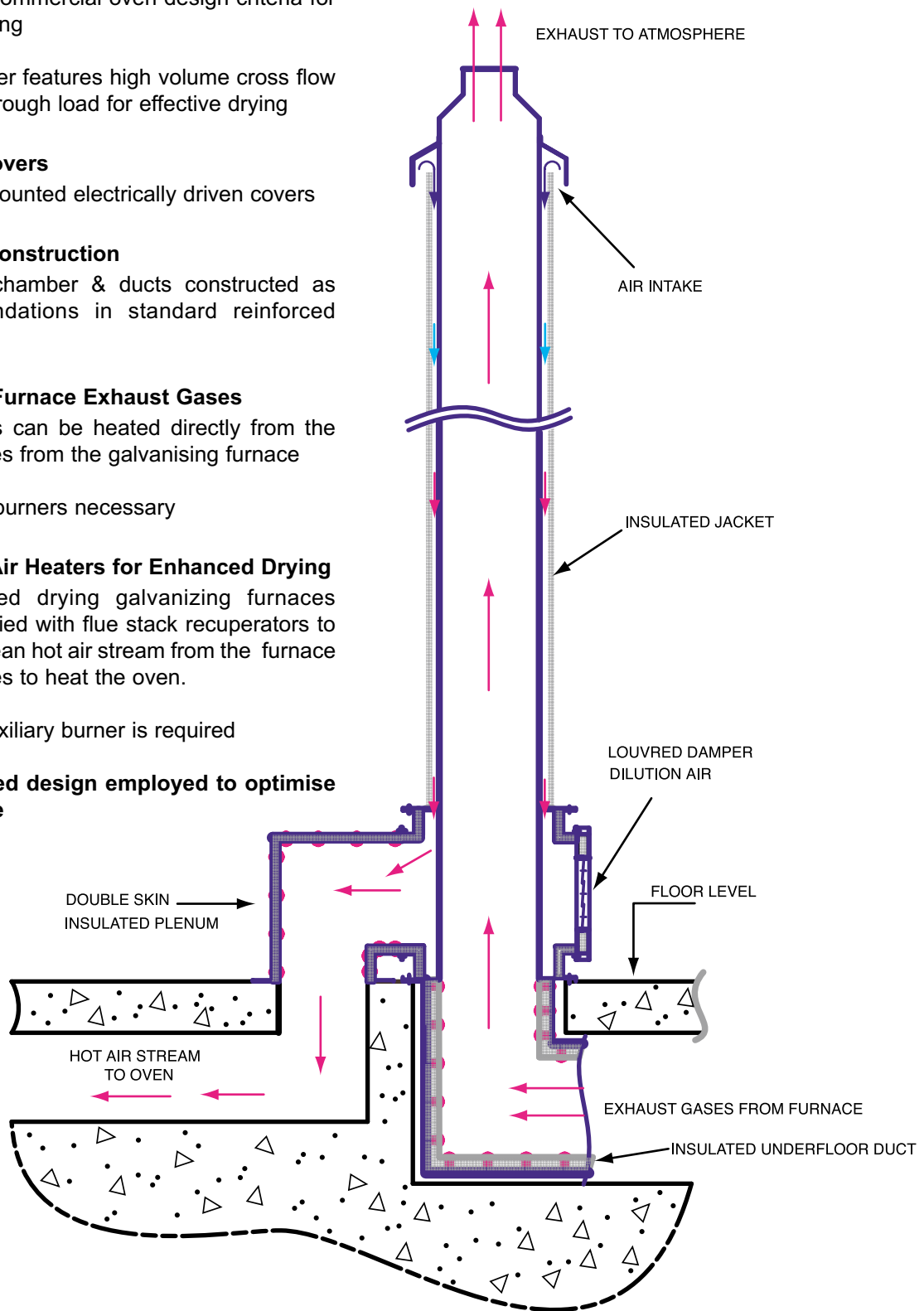
No auxiliary burners necessary

- **Flue Stack Air Heaters for Enhanced Drying**

For enhanced drying galvanizing furnaces can be supplied with flue stack recuperators to produce a clean hot air stream from the furnace exhaust gases to heat the oven.

Again **NO** auxiliary burner is required

Computerised design employed to optimise performance



TYPICAL LAYOUT FOR FLUE STACK AIR HEATER

For more information please contact us at:

Protherm Engineering (Walsall) Ltd.
Unit 33, Birchbrook Industrial Estate, Lynn Lane, Shenstone, Lichfield WS14 0DJ

T +44 (0)1543 481143 F +44 (0)1543 480330 E info@prothermengineering.co.uk

